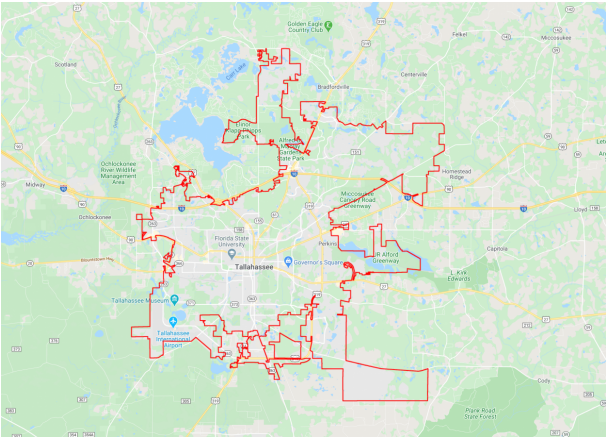


CITY OF TALLAHASSEE STARMETRO SECTION 5339 CAPITAL
4252699 Non-SIS



Project Description: CAPITAL FOR FIXED ROUTE
Lead Agency: MANAGED BY TALLAHASSEE
County: LEON
From:
To:
Length: 0
Phase Group: CAPITAL

Phase	Fund Code	2023	2024	2025	2026	2027	Total
CAP	FTA	418,004	418,004	0	0	0	836,008
CAP	LF	104,501	104,501	0	0	0	209,002
		522,505	522,505				1,045,010

Prior Year Cost: 2,912,699 Future Year Cost: 0Total Project Cost: 3,957,709LRTP: 2045 RMP Page 5-11 - Table 5-10

2021 was changed from to 0