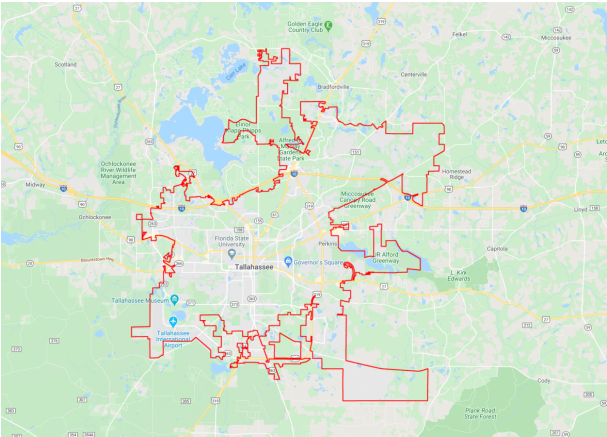


CITY OF TALLAHASSEE STARMETRO CAPITAL SECTION 5307
4222512 Non-SIS



Project Description: CAPITAL FOR FIXED ROUTE
Lead Agency: MANAGED BY TALLAHASSEE
County: LEON
From:
To:
Length: 0
Phase Group: CAPITAL

Phase	Fund Code	2023	2024	2025	2026	2027	Total
CAP	FTA	1,921,770	1,921,770	0	0	0	3,843,540
CAP	LF	480,442	480,442	0	0	0	960,884
		2,402,212	2,402,212				4,804,424

Prior Year Cost: 51,239,361Future Year Cost: 0Total Project Cost: 63,747,873 LRTP: 2045 RMP Page 5-11 - Table 5-10

2021 was changed from to 0